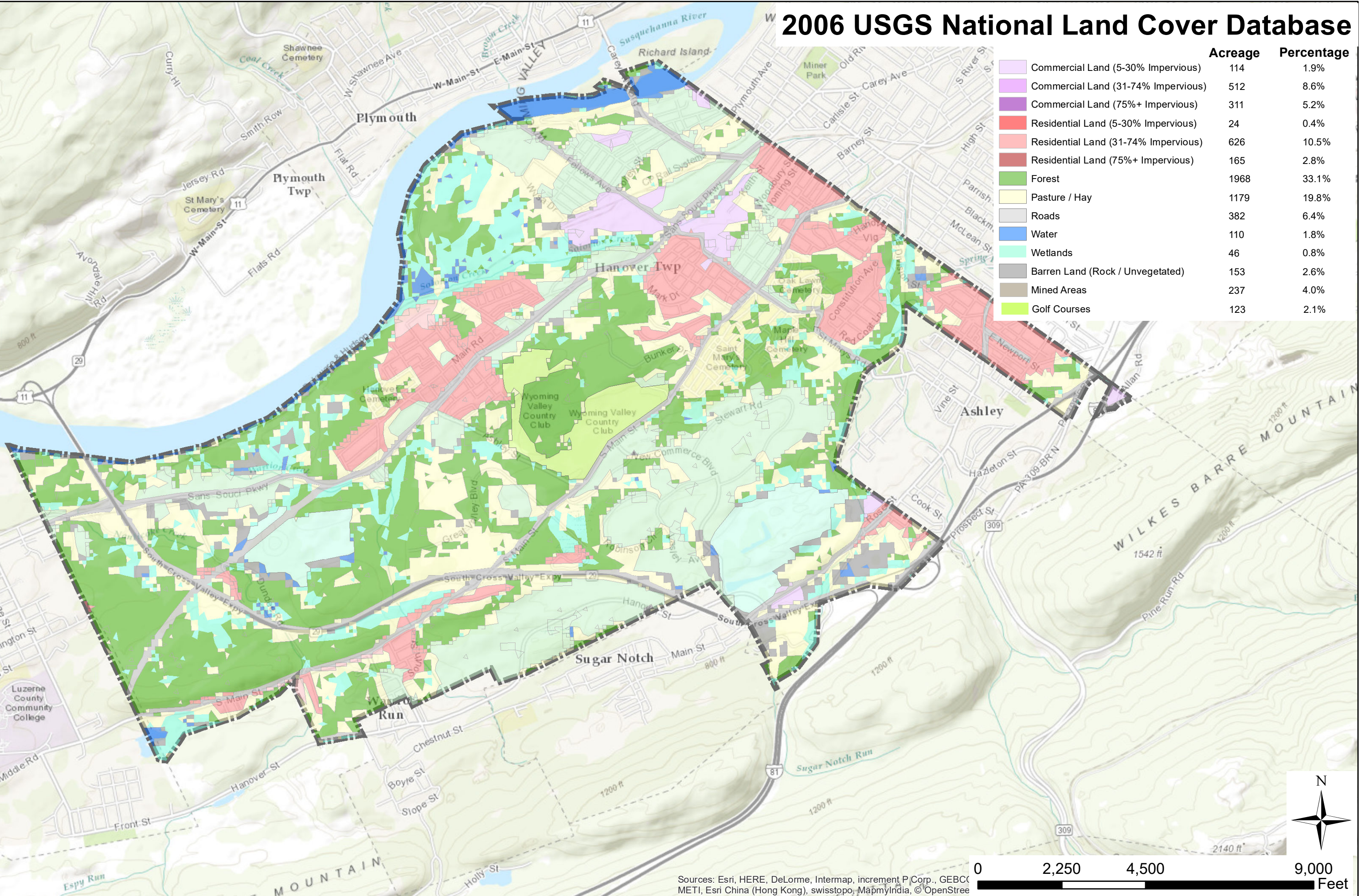


# 2006 USGS National Land Cover Database



	Acreage	Percentage
Commercial Land (5-30% Impervious)	114	1.9%
Commercial Land (31-74% Impervious)	512	8.6%
Commercial Land (75%+ Impervious)	311	5.2%
Residential Land (5-30% Impervious)	24	0.4%
Residential Land (31-74% Impervious)	626	10.5%
Residential Land (75%+ Impervious)	165	2.8%
Forest	1968	33.1%
Pasture / Hay	1179	19.8%
Roads	382	6.4%
Water	110	1.8%
Wetlands	46	0.8%
Barren Land (Rock / Unvegetated)	153	2.6%
Mined Areas	237	4.0%
Golf Courses	123	2.1%